

Free sewing pattern for Elf hat





RITO
#RITOHOBBY



[Download PDF here](#)

Materials:

- [1 piece Polar fleece fabric](#)
- [Yarn for the tassel](#)
- [Overlocker](#)
- [Scissors](#)
- [Tape measure](#)
- Pencil
- [Paper](#) - minimum A4 size
- Preferably a long [ruler/patchwork ruler](#)



RITO
#RITOHOBBY

Instructions

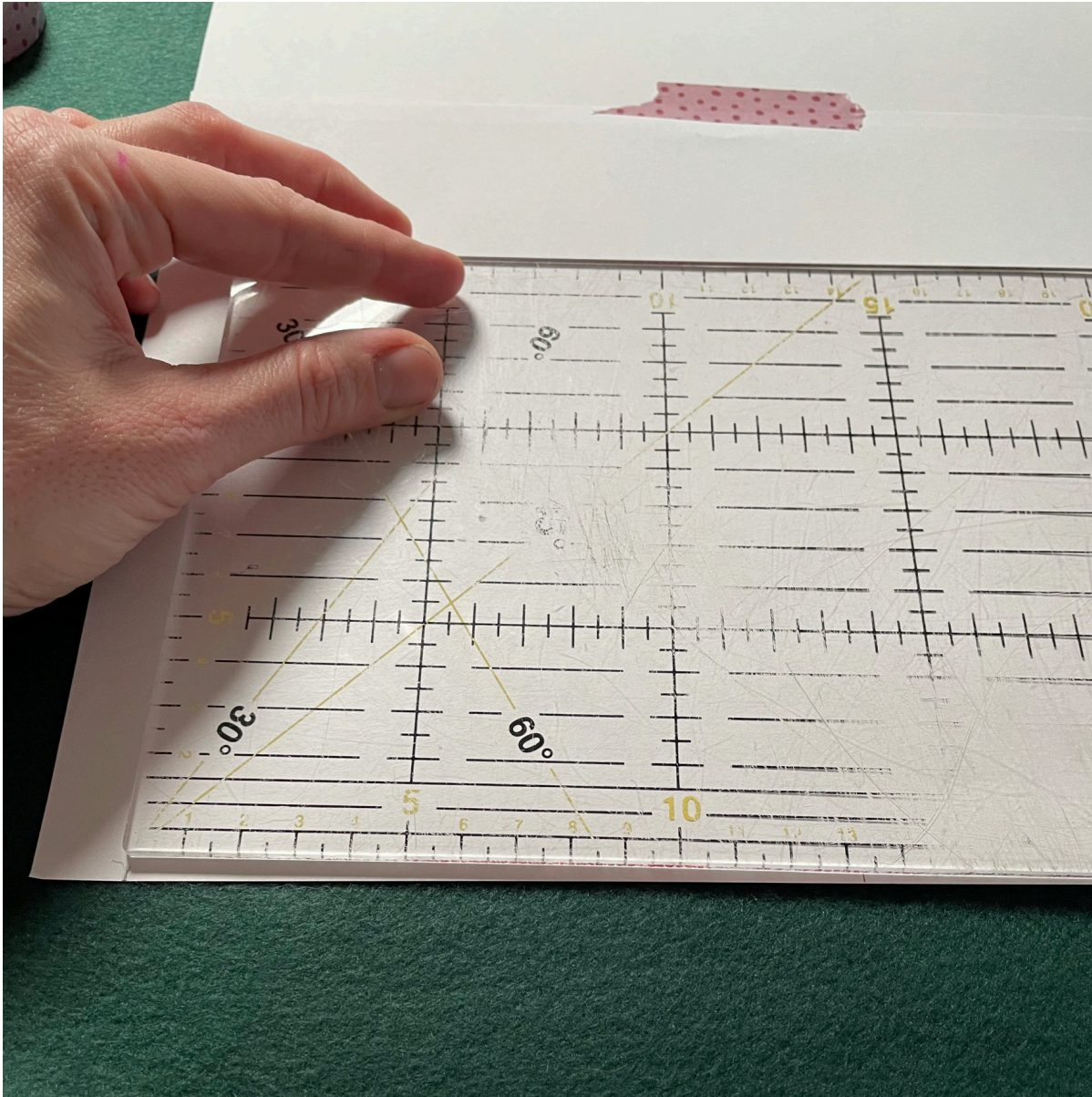
1. Start by measuring the circumference of the head that will wear the hat.
2. Cut out the edge of the hat: 12 cm in width x the head measurement in length plus 2 cm.
3. On paper, draw half the length of the edge.



4. Find the centre and draw a line on your paper.



RITO
#RITOHOBBY



5. Measure from the edge of the paper to the centre line. Note your measurement.
6. Tape paper together to get the desired length for the hat.



RITO
#RITOHOBBY

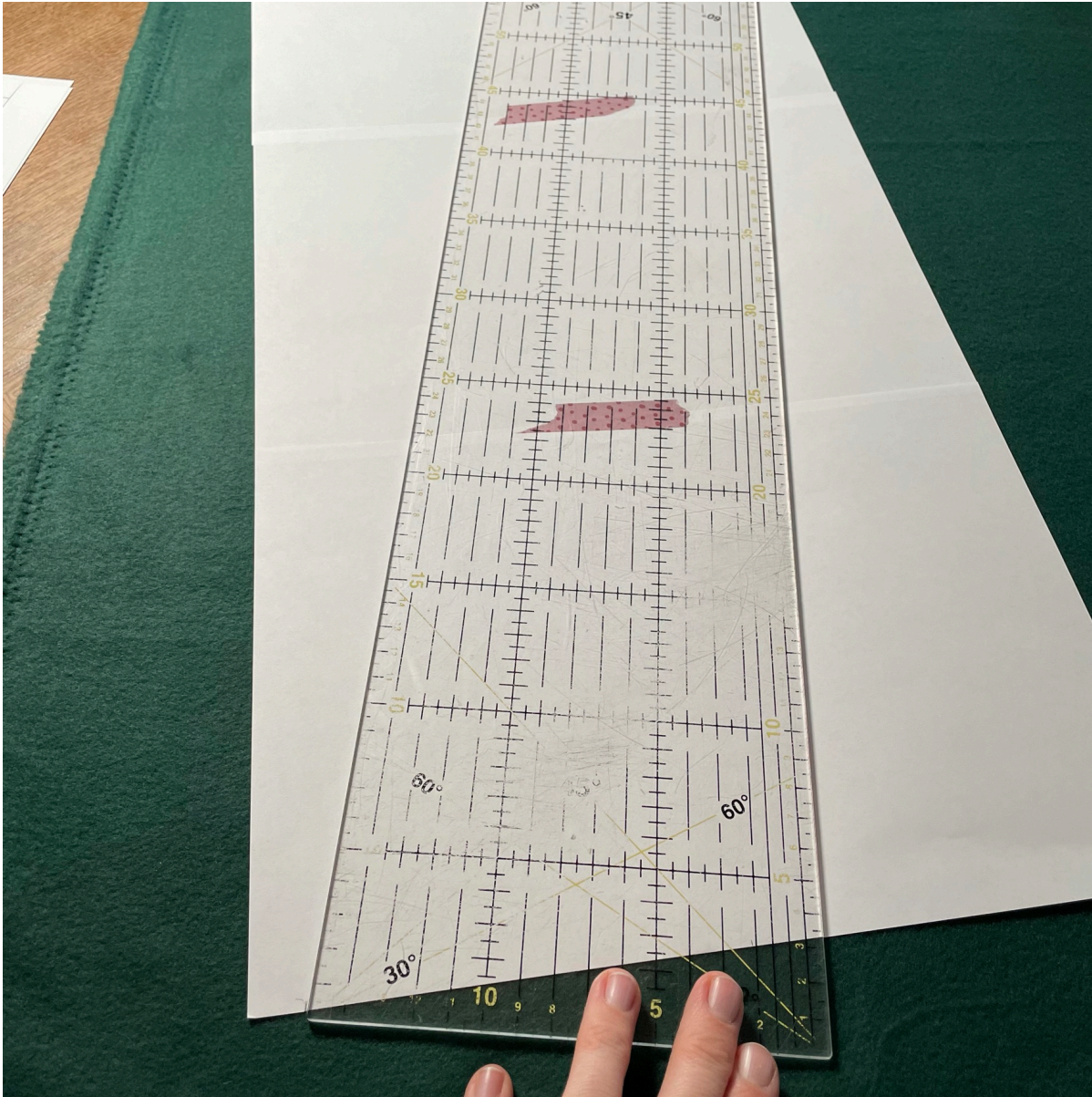


7. On the top paper, draw a line at the top marking the centre of your hat; the measurement you noted in **point 5**.

8. Using a long ruler, draw a line going from the bottom to the top.



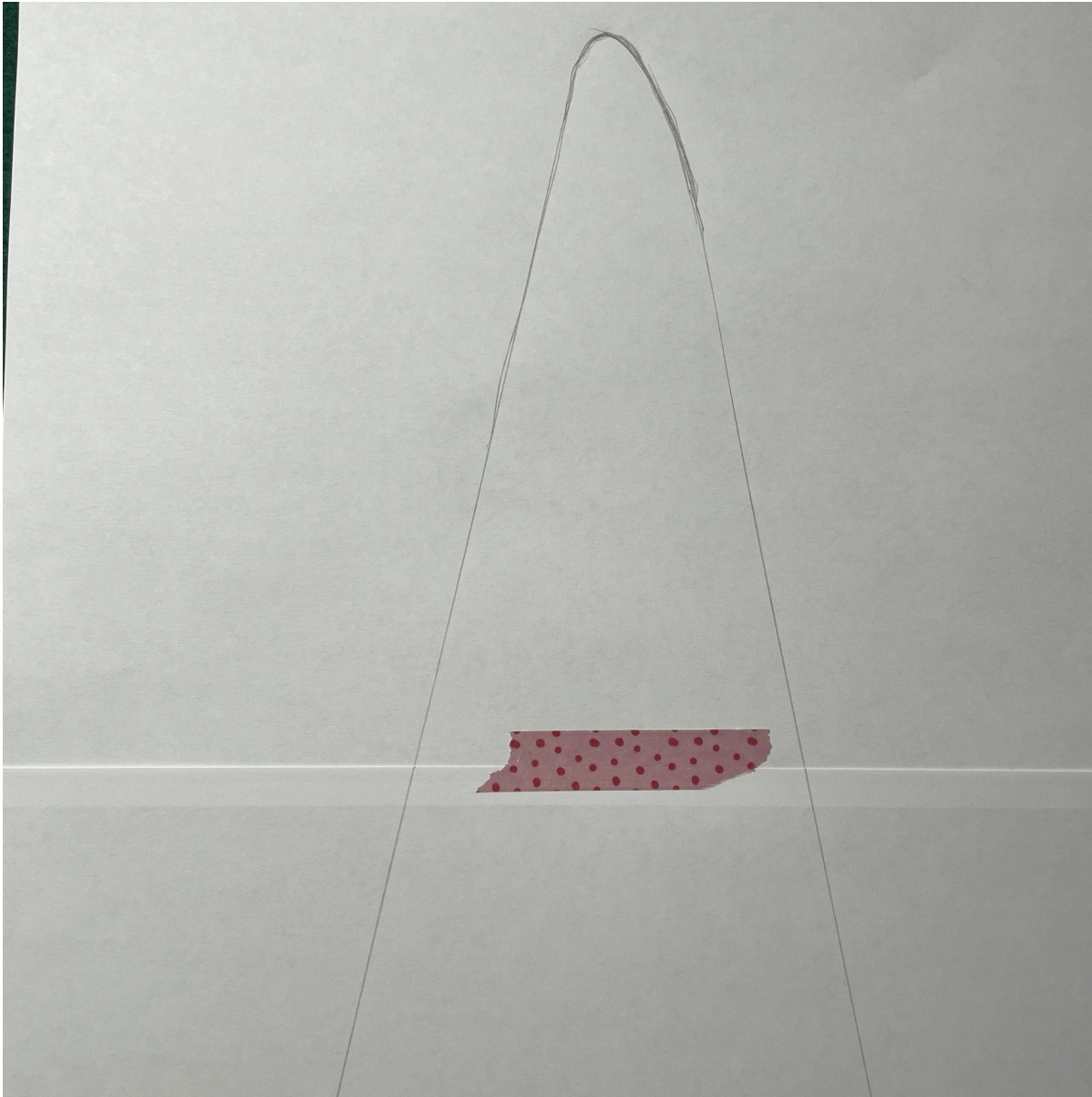
RITO
#RITOHOBBY



9. Lav en blød runding i toppen.



RITO
#RITOHOBBY



10. Cut out your paper pattern.

11. Cut out in fabric WITHOUT seam allowances.



RITO
#RITOHOBBY



12. Sew the hats together right sides together, but sew the direction way on both sides. This way you won't pull the fleece askew and your horizontal seams will lay nicely to the same side.



RITO
#RITOHOBBY



13. Turn your hat right side out.

14. Sew the ends of the hat edge together right sides together.



RITO
#RITOHOBBY



15. If you want the hat to be sewn on either side of the ears, find the center of the hat by stacking the seams.



RITO
#RITOHOBBY



16. Fold your hood edge in half lengthwise and place it around your hat right sides together with the edge stitching on the one center you just found.



RITO
#RITOHOBBY



17. Pin or clip the whole thing in place.



RITO
#RITOHOBBY



18. Sew all the way around.



RITO
#RITOHOBBY



19. Make a tassel to decorate your finished Santa hat, if desired. For example, you can make it like this;

How to make a tassel for the Santa hat

1. Wrap a fair amount of yarn around a piece of cardboard the same length as you want your tassel. When you are finished, cut the thread so that the end is as long as the length of your tassel.

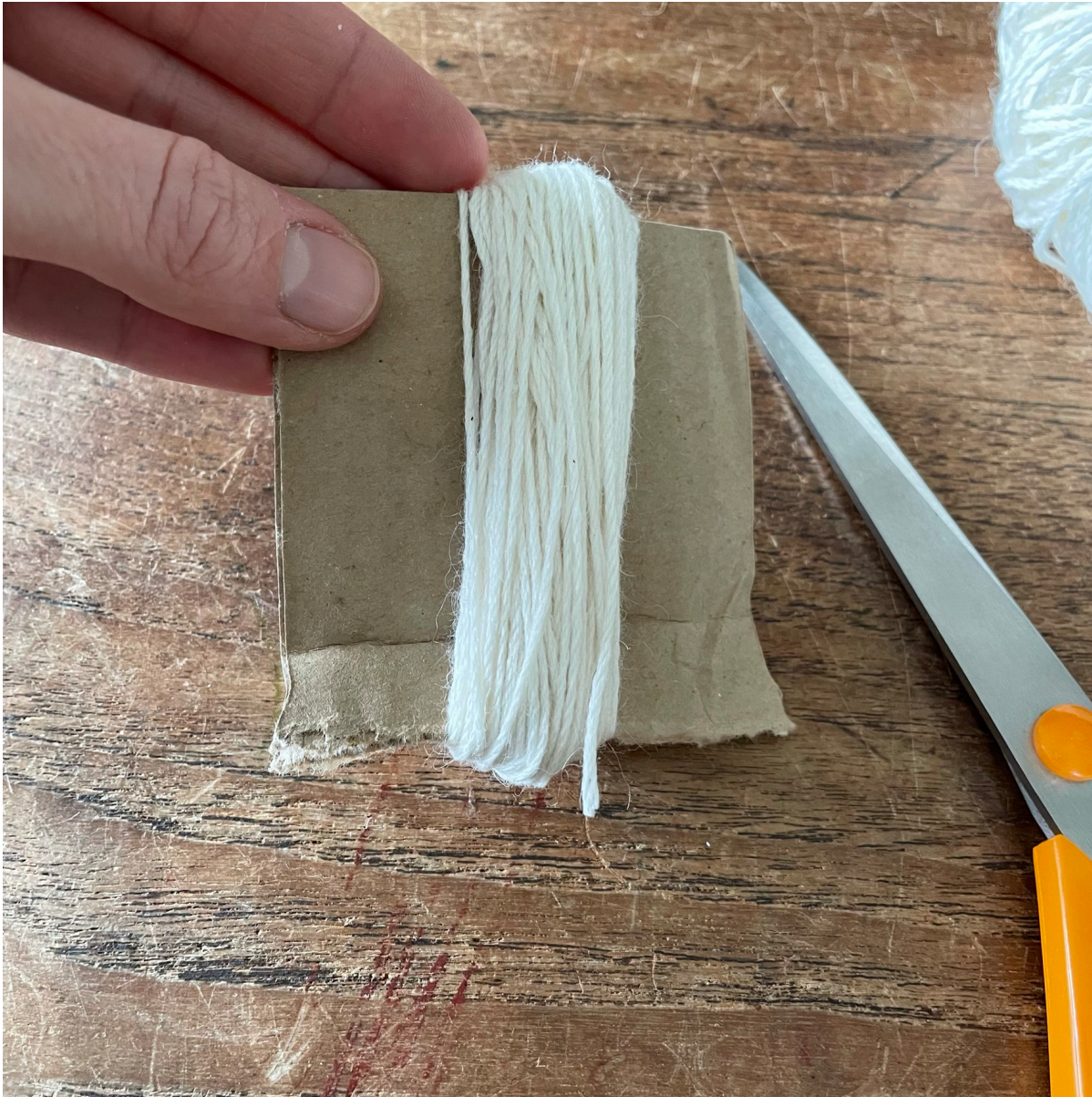


RITO
#RITOHOBBY





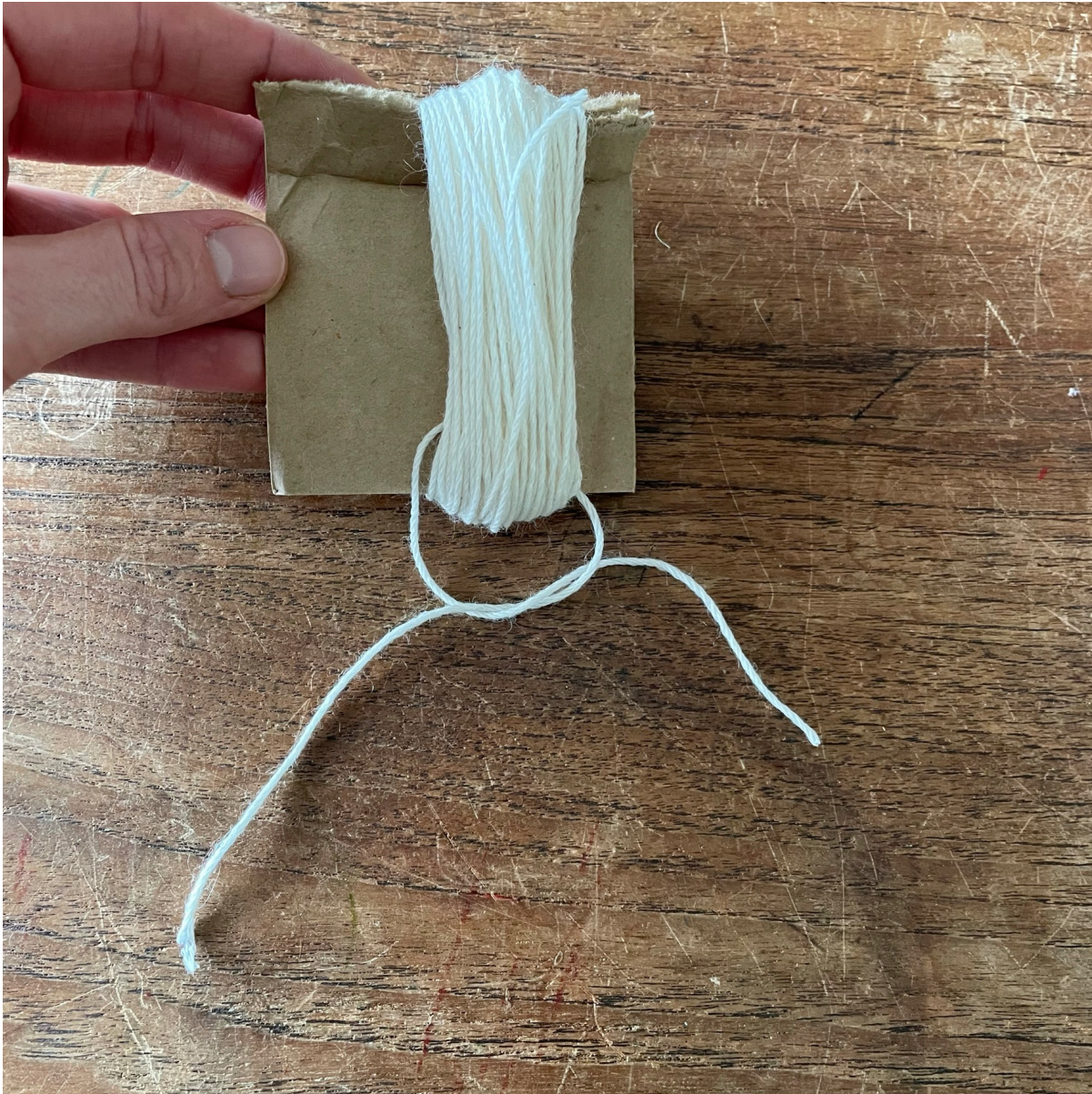
RITO
#RITOHOBBY



2. Insert a 10-15 cm piece of yarn and tie tightly.



RITO
#RITOHOBBY





RITO
#RITOHOBBY



3. Take it all off the cardboard. If necessary, cut the end of your tassel (the opposite end to where you just tied it) before removing it from the cardboard.



RITO
#RITOHOBBY



4. Wrap yarn around the top of the tassel.

5. When you're done, cut the yarn so it's about the same length as your tassel (plus a little extra) and then sew into the wrapped yarn and out the end of your tassel.

6. Cut the tassel to size.



RITO
#RITOHOBBY





RITO
#RITOHOBBY



7. Sew the tassel to the top of your hat. In the pattern, we've only stuck the yarn through to the back of the hat, tied two knots and cut the yarn, which is fine.



RITO
#RITOHOBBY





RITO
#RITOHOBBY





RITO
#RITOHOBBY

