

Free sewing pattern for elf hat



[Download PDF here](#)

Materials:

- [Polar fleece](#) - at least 2 different colours, 1 of each is enough.



- [Overlocker](#)
- [Scissors](#)
- [Tape measure](#)
- Pencil
- [Paper](#) - minimum A4 size
- Preferably a long [ruler/patchwork ruler](#)

Instructions

1. Start by measuring the circumference of the head that will wear the hat.
2. Cut out the edge of the hat: 12 cm in width x the head measurement in length plus 2 cm.
3. On paper, draw up half the length of the edge.



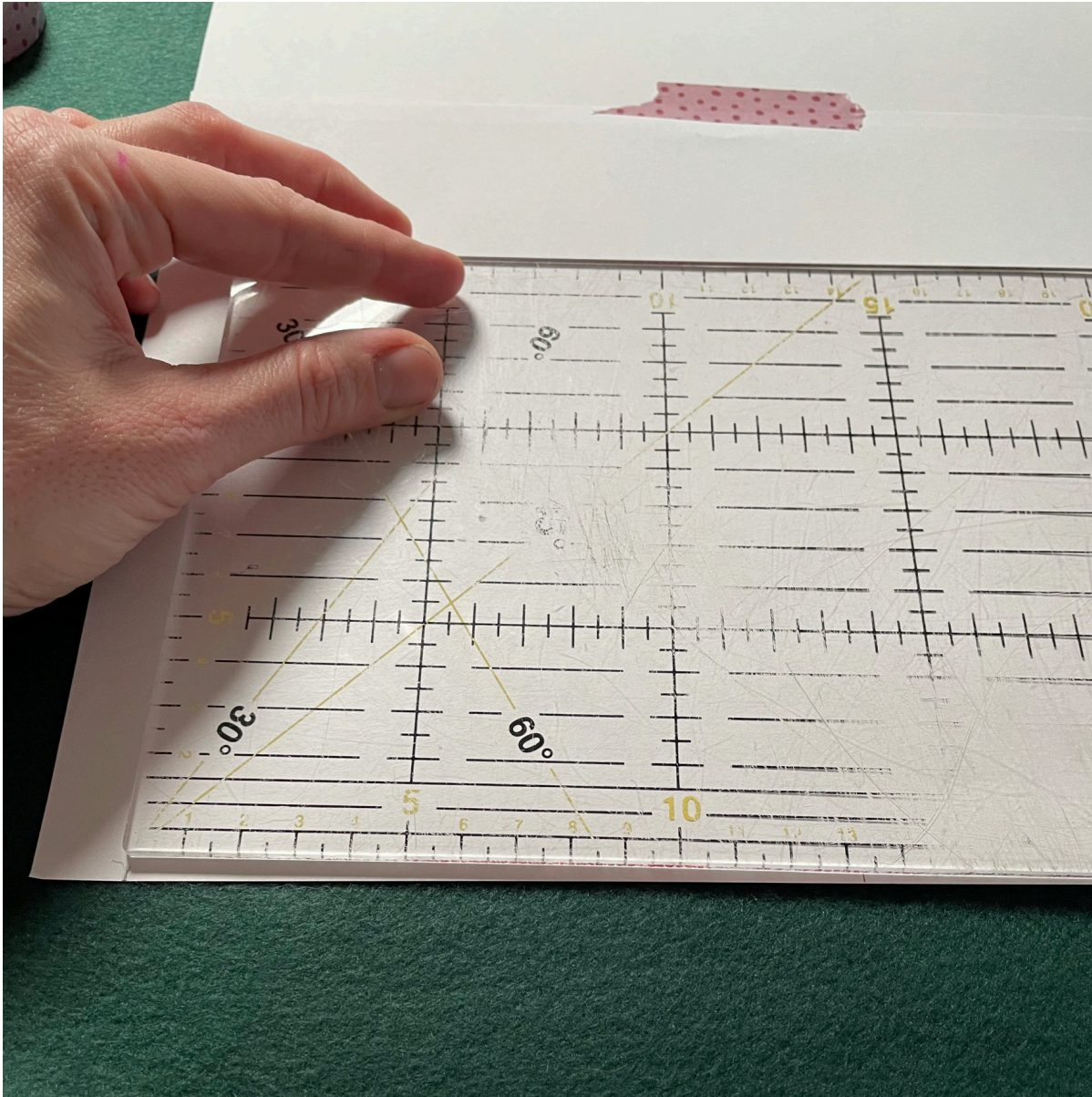
RITO
#RITOHOBBY



4. Find the centre and draw a line on your paper.



RITO
#RITOHOBBY



5. Measure from the edge of the paper to the centre line. Note your measurement.
6. Tape paper together to get the desired length for the hat.



RITO
#RITOHOBBY

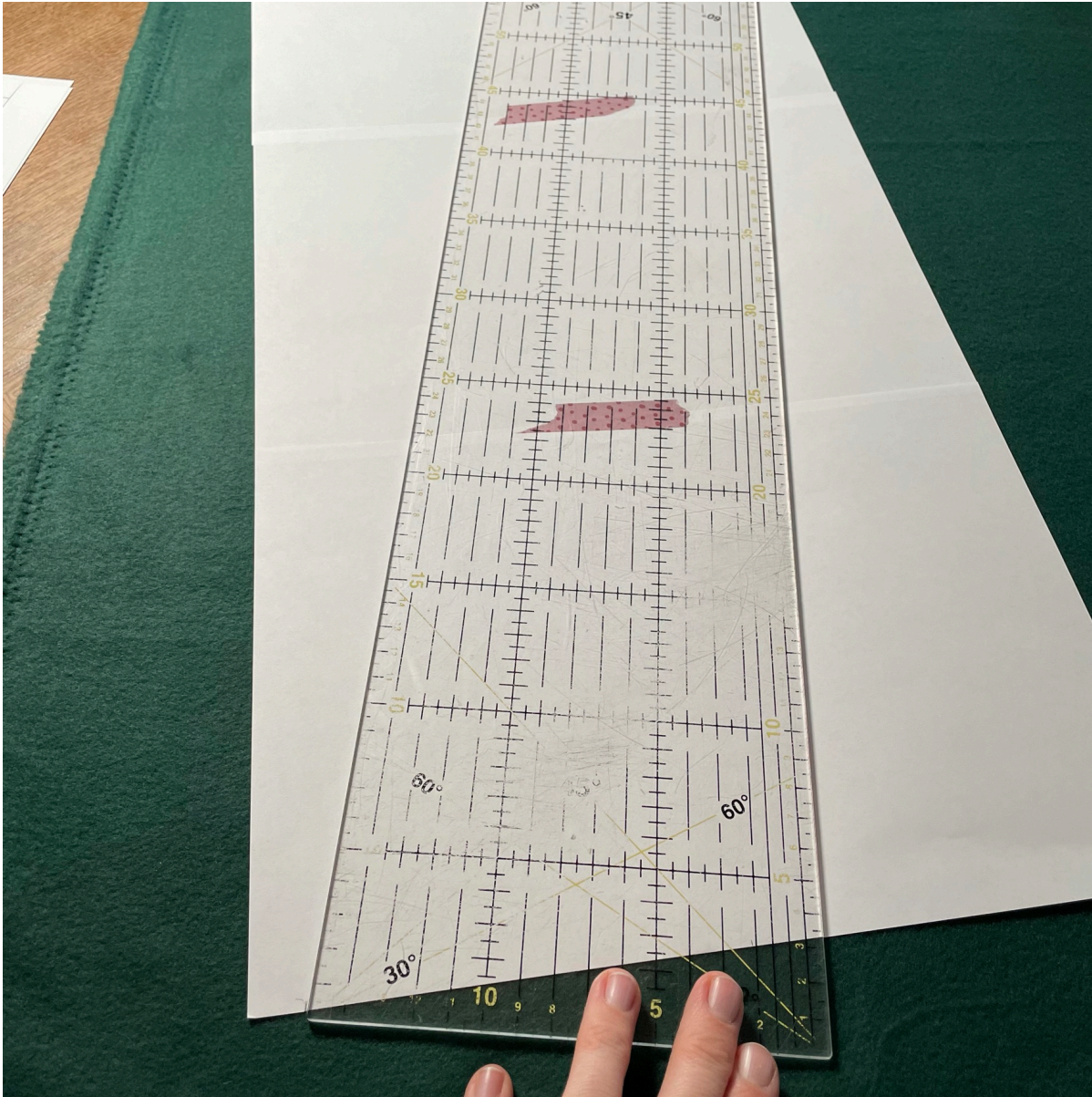


7. On the top paper, draw a line at the top marking the centre of your hat; the measurement you noted in **point 5**.

8. Using a long ruler, draw a line going from the bottom to the top.



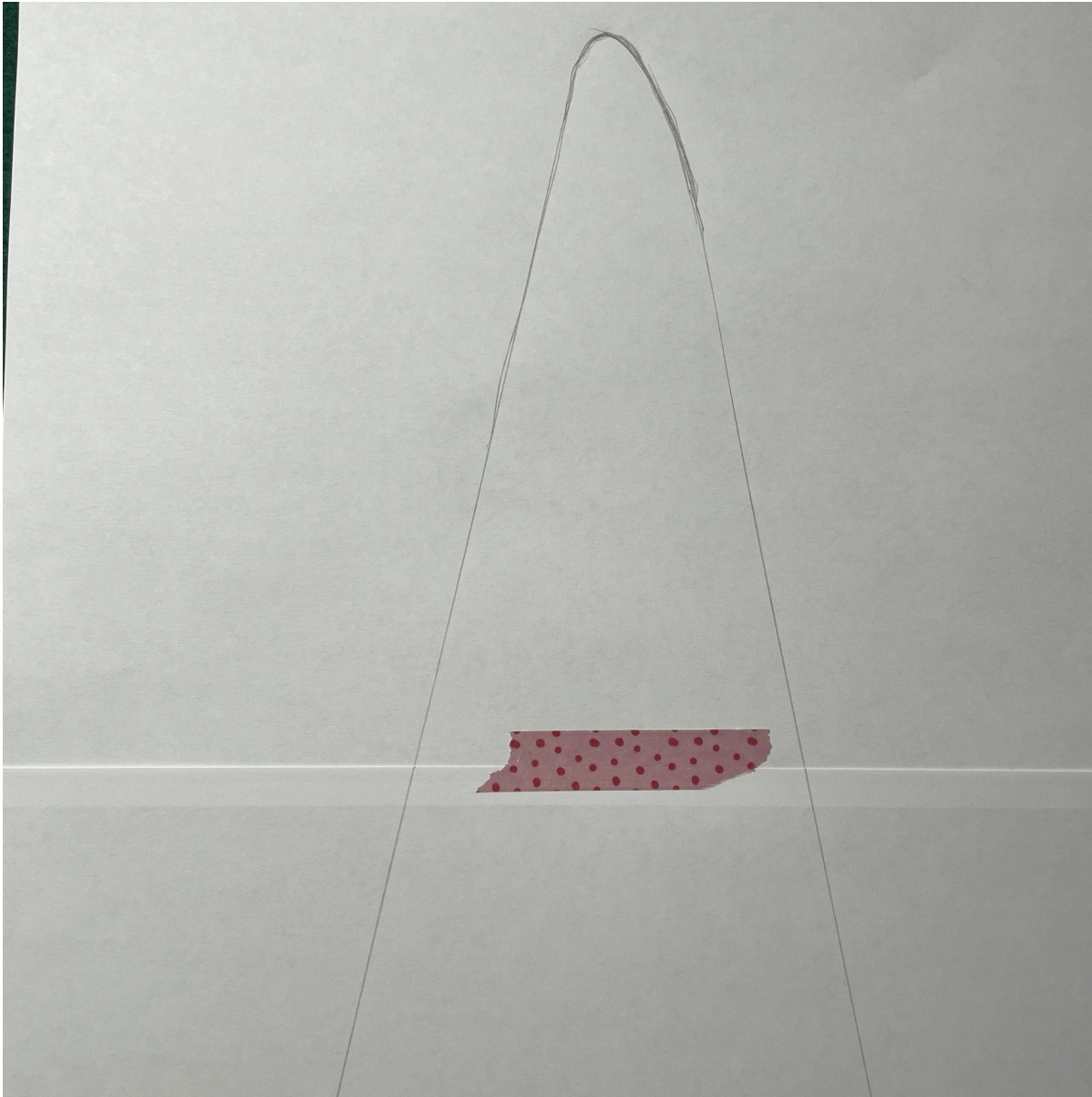
RITO
#RITOHOBBY



9. Make a soft curve at the top.



RITO
#RITOHOBBY

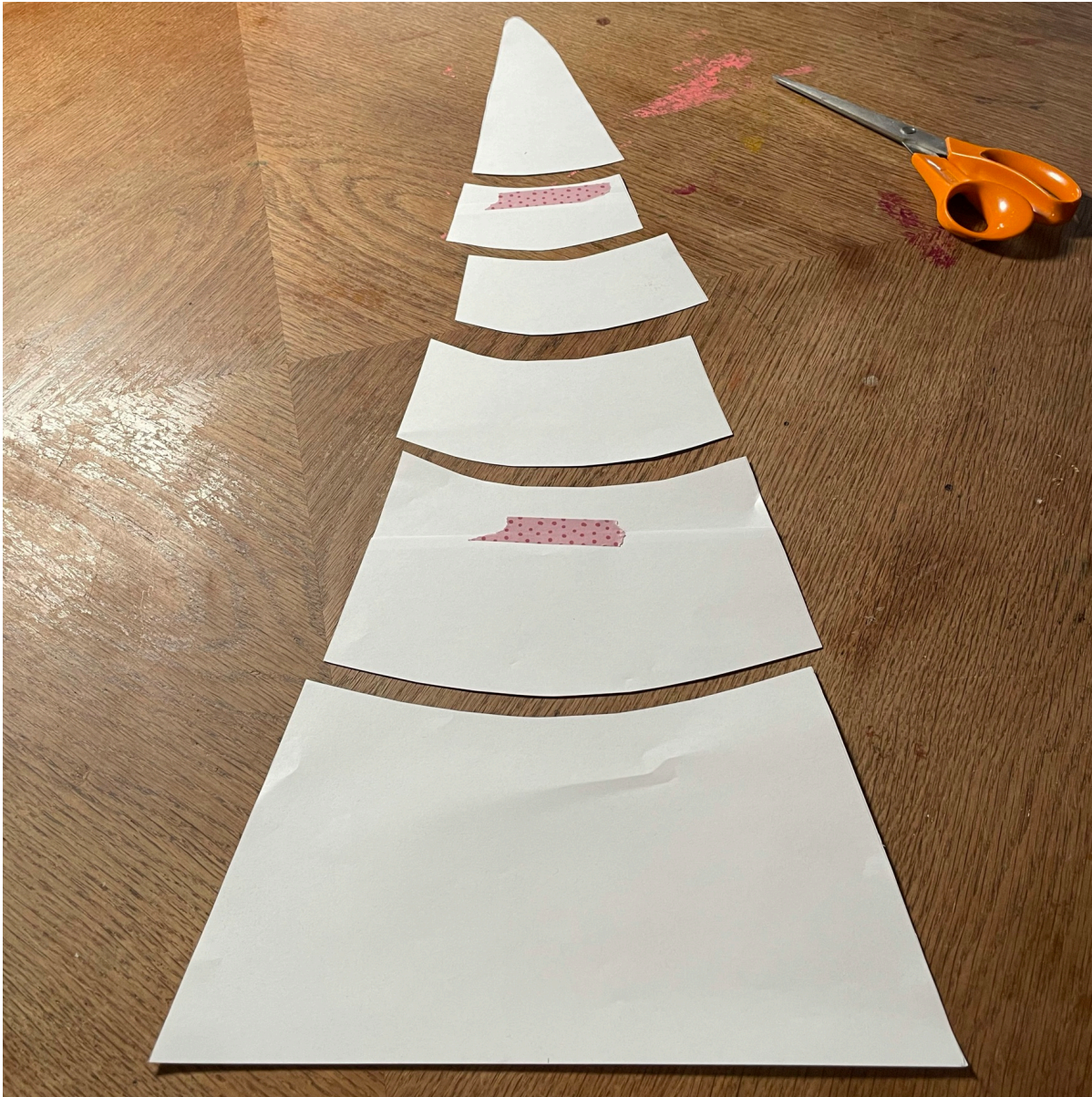


10. Cut out your paper pattern.

11. Cut out the pattern.



RITO
#RITOHOBBY



12. Lay the fabric double and cut out the pattern pieces. You cut WITHOUT seam allowances in the sides and WITH seam allowances at the top and bottom.



RITO
#RITOHOBBY





13. Sew all the pieces for one side together and then all the pieces for the other side together. Then you have two hats.



RITO
#RITOHOBBY



14. Sy Sew the hats together **RIGHT SIDES** together, but sew the same direction on both sides. That way you won't pull the fleece askew and your horizontal seams will lay nicely to the same side.



RITO
#RITOHOBBY





RITO
#RITOHOBBY



15. If you want the hat stitching to be on either side of the ears, find the center of the hat by stacking the seams.

16. Sew the ends of your hat edge together right sides together.



RITO
#RITOHOBBY



17. Fold the hat band in half lengthwise and place it around your hat right sides together.



18. If you want your hat to be sewn on either side of your ears, find the middle of your hat by placing the seams on top of each other.



RITO
#RITOHOBBY



19. Place the edge stitching on one center of the hat. Pin or clip it all in place and sew all the way around.



RITO
#RITOHOBBY





RITO
#RITOHOBBY



