

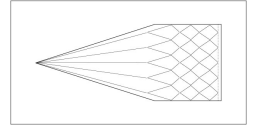
Knitted Christmas hat for children and adults





RITO
#RITOHOBBY





[Download PDF here](#)

Christmas is a very special time of the year, and why not celebrate this holiday with a lovely soft hat to warm your ears in a quality that is in NO way scratchy, but velvety and wonderful to use for knitting. This Christmas hat has a simple but really nice pattern. It's traditional, but with a small twist. The hat is knitted with [Infinity Hearts Baby Merino](#), which is made from 100% soft Merino wool.

Measurements

Size: S (M) L

Measurements in cm: 40-48 cm (50-56 cm) 58-64 cm

Finished hat circumference: cm 40 cm (45 cm) 48 cm

Materials

Yarn: [Infinity Hearts Baby Merino](#). Made from 100 % Merino wool Yardage 50 g = approx. 170 s.

Yarn consumption

Small: 2 skeins

Medium: 3 skeins

Large: 3 skeins

[Pom pom/Tassel](#). This pattern uses a [Pom pom Rabbit](#) 80 cm.

Knitting needle: circular needle and double-pointed needle str. 3,00 mm, or the needle size you need to obtain 10 x 10 cm = 28 s x 38 n

Abbreviations

n: needle

s: stitches

K: knit



RITO
#RITOHOBBY

P: purl

tog: together



Ret



Aflukkede masker



1 m løft af, strik 2 m r sm, løft den løse m over



1 m løst af, 1 m r, løft den løse m over



2 r sm



Vrang



Vrang



Slå en maske ekstra op efter en vrangmaske



slå en maske op og strik en vrangmaske



Slå om pinden (ny maske) efter den anviste maske



Slå om pinden (ny maske) før den anviste maske

Instructions

Knitted Christmas hat

Cast on 126 (144) 162 s on n 3 mm, circular needle or long double pointed needles. Knit circular. Place a stitch marker where you begin your work to create a better overview of the pattern.

Knit a drawstring. You can knit this as long as your elastic specifies. It is up to you whether you use



an elastic waistband or a wider type.

Example for a small waistband elastic (approx. ½ cm width): Knit 1½ cm in plain knitting, then you knit *K2 tog, yarn over n* the needle out, knit 1½ cm in plain knitting, and then the pattern begins. You can adjust the measurements of the 1½ according to the desired width of the elastic. This is the drawstring.

You knit all sizes with the same pattern, A + B. Repeat the pattern a total of 7(8) 9 times.

In addition, knit pattern A 1 (2) 3 times, so the hat is extended on this piece to fit the head. Then knit B and then C once. This applies to all sizes.

Disregard the grey stitches, as these have only been made because there are 3 stitches in the pattern that you don't knit together as one. The grey stitches may be a little confusing when initially looking at the pattern and counting.

Finishing

When pattern C is finished, you finish the work like this: Knit K2 tog the entire round, break the yarn and draw the strand through the stitches to bind off, draw the yarn onto the wrong side and weave in ends.

Assembly: Weave in ends on the wrong side and sew the drawstring. You can leave a little opening, so you can adjust the elastic, or change it if you want to make the hat bigger or smaller.

You can also sew on a button on the top of the hat and add a tassel or make a pom pom in the colour you prefer.



RITO
#RITOHOBBY



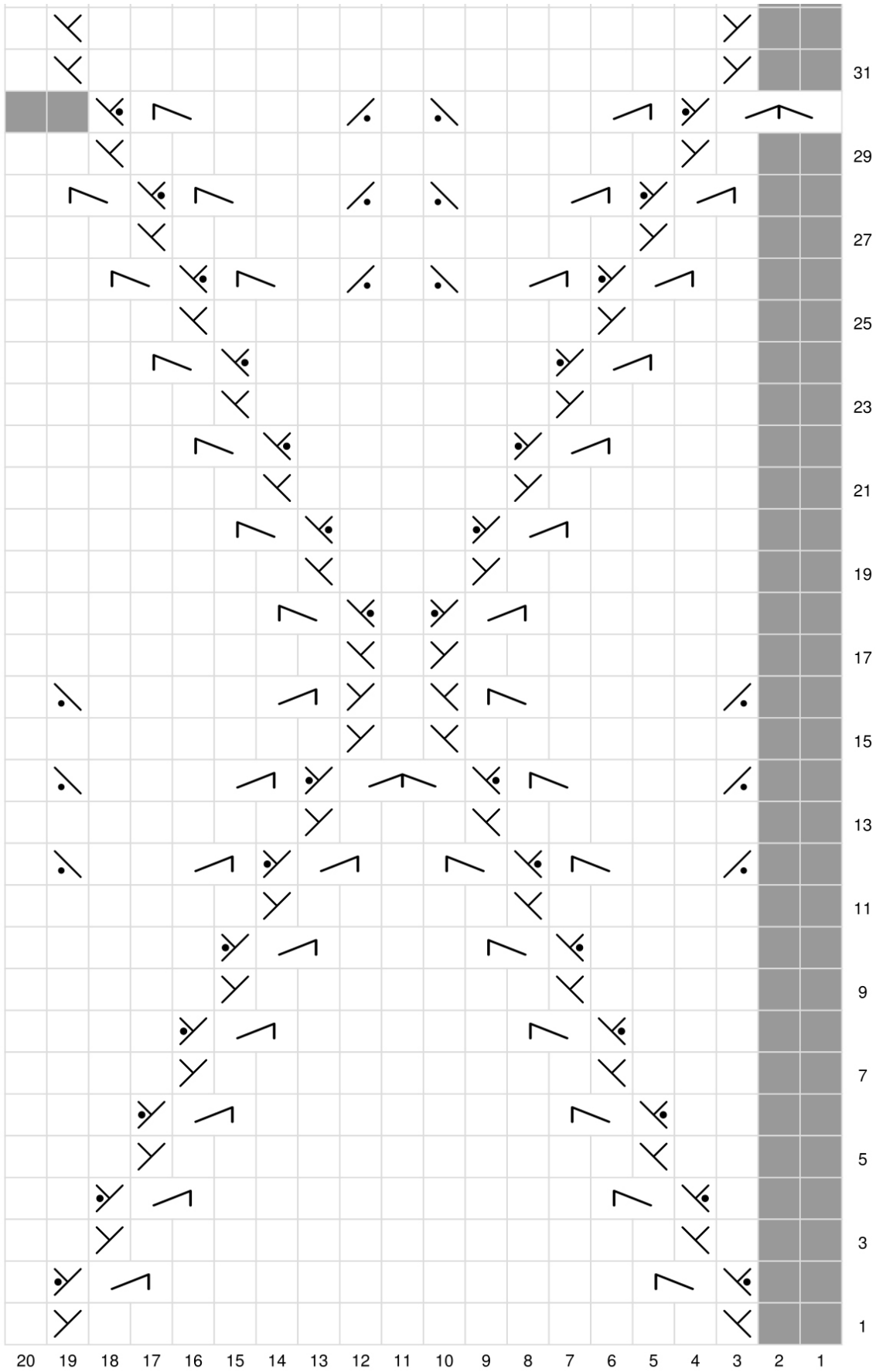
Pattern A + B applies to all 3 sizes

Pattern A



RITO

#RITOHOBBY





Pattern B



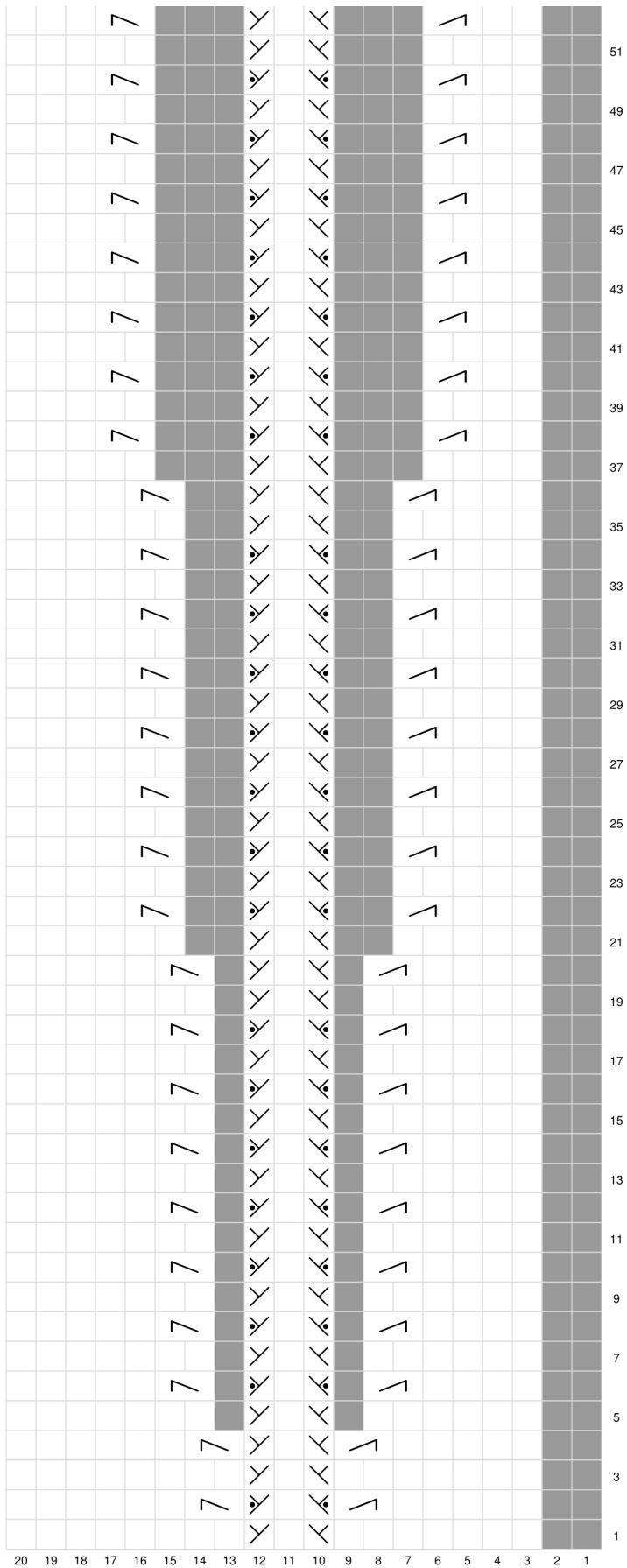
RITO
#RITOHOBBY

Pattern C (Top of the hat, decreases)



RITO

#RITOHobby



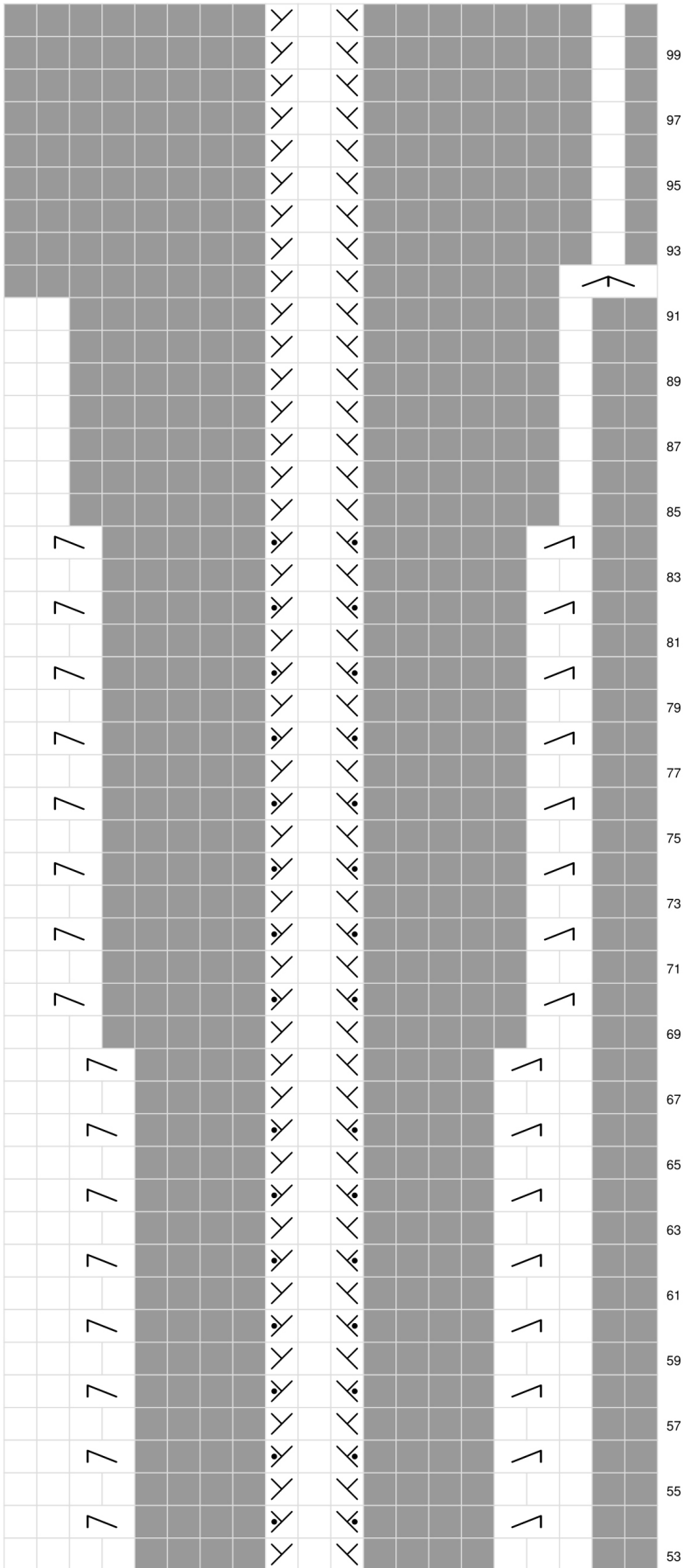


RITO
#RITOHOBBY



RITO

#RITOHOBBY





RITO
#RITOHOBBY



RITO
#RITOHOBBY





RITO
#RITOHOBBY